



Worship

- In-person worship—**9:00 am Sundays—masks required**
- Online worship continues, and will be posted on the [church website](#) and [Facebook page](#)



Church Council 2021

Steven Dickey
Carmen Hanson
Jennifer Hinker
Jon Holzer
Derek Horeis
Elizabeth Kohlhof
Tom Sebelien
Lisa Spencer
Stacy VanCura
Pastor Bruce Kuenzel

The Marks of Discipleship

- † Pray daily
- † Worship weekly
- † Read the Bible
- † Serve at or beyond Light of Christ
- † Relate to others for spiritual growth
- † Give of my time, talents and resources

Contact us!

Light of Christ Lutheran
3976 County Line Road SE
Delano, MN 55328
(763) 972-2400



LightOfChristLutheran.com
Terri.Reuter@locdelano.com



Free Fresh Produce and Dairy Monday, December 13th 4:00-5:00 pm

Boxes of fresh produce and dairy products will be available for drive through pickup on a first come, first serve basis at the following locations:

Corcoran

St. Thomas Catholic Church
20000 County Road 10
Corcoran, MN 55340

Rockford

Our Father's Lutheran
3903 Gilbert Ave SE
Rockford, MN 55373

Delano

Light of Christ Lutheran Church
3976 County Line Road SE
Delano, MN 55328

Buffalo

Buffalo Covenant Church
1601 Highway 25 North
Buffalo, MN 55313

St. Michael

Alleluia Lutheran Church
10401 30th St NE
St. Michael, MN 55376

For assistance locating a specific site or for questions, please contact us at nourishinghope.oflc@gmail.com or Facebook Messenger.

NourishingHOPE is a ministry of Our Father's Lutheran Church, in cooperation with four area churches. Our vision is to relieve area food insecurity and promote wellness in mind, body, and spirit for people East-Central Wright County. For information on you or your organization partnering with NourishingHOPE, please visit our website at www.ourfatherschurch.org/nourishing-hope.html

Help is needed!

This is a great opportunity to put your faith and love into action, while serving our neighbors in need. We need folks to help box up the food packages at Our Father's Lutheran, Rockford, at about 11:30 am, others to help load our LOC trailer of about fifty food boxes, and then a crew here at Light of Christ at 3:45 p.m. to help with handing out the boxes to community neighbors who drive by to pick up their food. Please contact Tim Johnson, Shared Ministry Director, at 952/472-1755 or tim.johnson@locdelano.com anytime.

Food Shelf Donations

This Christmas season, the Light of Christ Worship and Music Committee is asking for donations to the Delano Helping Hands Food Shelf, in lieu of poinsettias. You are invited to dedicate your donation in memory or in honor of a loved one. Please [click here](#) to complete the required form **by December 20th**.

Christmas 4 A Cause

Christmas 4 A Cause gift drop off will be on **Tuesday, Dec. 14th from 6-7:30pm**. Please remember to label your items with the individual number assigned to the wish (Example 12-2). If possible, please wrap adult gifts. Please *do not* wrap child gifts – we provide wrapping paper so that parents can share the joy.

I want to say a big "**THANK YOU**" to all who have signed up to purchase gifts for Christmas 4 A Cause. It is so heartwarming to see the generosity that our congregation has to help families in need during this holiday season. There are still a few more slots to fill. You can find the [sign up](#) here. Any questions, please contact Kim Wertz @ 952-457-9253 or kimw1517@gmail.com.



Thank You, LOC Volunteers!

Thank you to those who are volunteering at the Delano food shelf and to those who are helping with monthly food distribution both in filling boxes of food in Rockford and those who are distributing those boxes at our church. Your help is SO needed!!



Light of Christ Volunteers pack meals

Approximately 20 volunteers from Light of Christ packed meals at Feed My Starving Children on Dec. 7—an event coordinated by our Community Life Committee.



Caring Corner

(by Catherine Borman with LOC Healing and Wholeness Committee)



Ah, the Christmas season...when we hear Andy Williams singing about it being the most wonderful time of year and Elvis Presley belting out how he'll have a blue Christmas without his loved one. Despite the fact that Christmas is truly a time to be joyful in celebrating the birth of our savior Jesus Christ, many people instead experience the "holiday blues." The National Alliance on Mental Illness (NAMI) defines the holiday blues as temporary feelings of anxiety and depression during the holidays that can be associated with extra stress, unrealistic expectations, or even memories that accompany the season. Symptoms include fatigue, tension, frustration, sadness, loneliness or isolation, and/or a sense of loss.

For me, when I think about the holiday blues, several thoughts pop into my mind. First, I think of Elvis Presley's song "Blue Christmas." Some of the lyrics include: *"I'll have a blue Christmas without you. I'll be so blue just thinking about you. Decorations of red on a green Christmas tree won't be the same dear if you're not here with me."* Thinking about this song then leads me to think of my dearly departed paternal grandmother, Dorothy Heinzer. She was a huge Elvis Presley fan and passed down her love of him to me—literally in records. Sadly, she died just 8 days after the doctors had first given their diagnosis of brain cancer. This past August marked 30 years since she passed away, but I still remember how difficult those first Christmases were without her. Since then, I have lost 2 friends unexpectedly on separate occasions right around the holidays. Dealing with their deaths while simultaneously trying to embrace the Christmas spirit was a challenge I pray not to have to repeat. Dealing with a loved one's death seems to get even more difficult when the holidays come around, which may trigger those difficult holiday blues. Yet, for those who have experienced loss, I hope that you find comfort in knowing that we will all get to reunite again one day because of God's greatest gift, Jesus Christ.

Dealing with the loss of a loved one is not the only thing that can trigger the holiday blues. Other triggers may include over-commercialization, financial stress, and trying to balance shopping with hosting house guests, family obligations, and holiday parties (WebMD). For those of you who may be experiencing the holiday blues, here are some resources that you may find helpful:

- [NAMI Tips for Managing the Holiday Blues](#)
- [MAYO Clinic Tips for Coping with Stress, Depression, and the Holidays](#)
- [WebMD Tips for Dealing with Holiday Depression and Stress](#)

Additionally, Light of Christ will be hosting another Blue Christmas service on Sunday, December 19th at 5:00 pm. I have personally attended them in the past and they are extremely healing for the soul. The worship provides opportunities to express grief and pain as well as a focus on the promise of hope. From our church's Healing and Wholeness Committee, we all wish you a blessed Christmas and happy New Year.

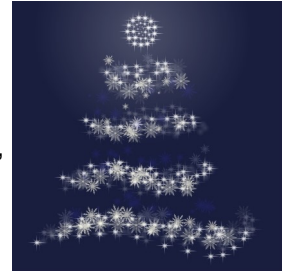
Join us as we celebrate the birth of Christ!

We will offer three worship services on Christmas Eve: **2:00, 4:00, and 10:00 pm**. The 2:00 and 4:00 services are “family-friendly” and will incorporate traditional Christmas Eve elements, along with elements geared toward children. This service will host a variety of music styles as well; from boisterous organ music to our children singing beloved Christmas carols. Please note, while the service may be more family friendly, there are elements that everyone can enjoy!

The 10:00 service is a candlelight service. This service will have a more meditative atmosphere but will still bring the absolute joy of Christmas. All services will be livestreamed on our Facebook page for those who choose to worship with us online. Christmas blessings to all!



Blue Christmas Service



Christmas is a festive time, but it can also be a sad and dark time for anyone who is experiencing “the blues” this Christmas due to a major loss, a disappointment, a physical or mental illness, or an unwanted and unexpected change. Please join us for a service of hope and healing on Sunday, December 19 at 5:00 pm. There will be opportunity for prayer, meditation, singing, and Holy Communion.

Columbarium niche price discounted through end of the year

The Columbarium Committee is now working with our identified suppliers to prepare for construction to begin in the spring and beginning pre-sales of niches.

If you are interested in learning more, and/or purchasing a niche, please contact Amy Bigot at 763-443-3750 or amybigot@gmail.com. She can answer any questions you may have and can help you initiate the purchase process. The cost to acquire a niche is \$3800, and one niche can hold up to two urns. **A pre-sales discount price of \$3610 is available for niches purchased through 12/31/21.**

We look forward to having a space at Light of Christ to honor our loved ones who have gone before us.



**Support
Light of Christ
Lutheran Church.**

When you shop at **smile.amazon.com**,
Amazon donates.

[Go to smile.amazon.com](https://smile.amazon.com)

amazonsmile

Stewardship 2022

If you haven't already submitted it, you can **complete** your 2022 pledge online at <https://bit.ly/LOC-Campaign-2022>

OR

Place your yellow pledge card in the offering plate

OR

Mail your pledge card to the church office at 3976 County Line Road SE Delano, MN 55328



2022 Offering Envelopes

If you requested pre-printed offering envelopes for 2022, they are available for pick up in the narthex.



**Word for the Week
from Pastor Bruce
Rejoice!**

The Third Sunday in Advent has often focused on joy. That focus grows out of the Scripture lessons assigned for this Sunday.

But rejoicing right now is hard to do. It's hard to rejoice in the midst of the disruptions, the disorientation, the disturbances, and the discouragement of a pandemic. But it's not impossible. We can rejoice and we need to rejoice. We can because Christ's first coming was into a world much like ours.

Madeline L'Engle was a Christian novelist and poet. She once wrote a poem called First Coming. It is one of my favorite Christmas poems. Here it is:

*God did not wait till the world was ready,
till . . . nations were at peace.
God came when the Heavens were unsteady
and prisoners cried out for release.*

*God did not wait for the perfect time.
God came when the need was deep and great.
God dined with sinners in all their grime,
turned water into wine. God did not wait*

*till hearts were pure. In joy God came
to a tarnished world of sin and doubt.
To a world like ours, of anguished shame
God came, and God's Light would not go out.*

*God came to a world which did not mesh,
to heal its tangles, shield its scorn.
In the mystery of the Word made Flesh,
the Maker of the stars was born.*

*We cannot wait till the world is sane
to raise our songs with joyful voice,
for to share our grief, to touch our pain
God came with Love: Rejoice! Rejoice!*

“Like” us on Facebook to get news, info and updates.



[Click here](#) to visit our Facebook page.

Don't have a Facebook account? No problem! You can still access our Facebook page and watch our live videos by clicking this [link](#). You *do not* need to sign into an account to view our Facebook page.

Sneak Peak!

A little glimpse of the work our young people are putting into the upcoming Sunday school Christmas program. The Sunday school program is virtual and will be shared during worship both in person and online at **9 am on 19th**!



**Summer 2022 HS Trip...
Save the Dates!**

We hope you can join us for a special trip this summer for HS youth... we will be attending the [National Lutheran Youth Gathering on July 24-28, 2022!](#) This gathering takes place every 3 years and rotates to different cities around the US... this summer it is taking place in Minneapolis at US Bank Stadium! Kirsten is working to arrange some service days following the trip so we'll most likely be gone from July 24-30, but more details will be coming soon! For now, put the dates on your calendar and talk to any LOC friends! Official registration will open on Sunday, January 23... which is when we will be sharing about our Summer 2021 Denver Trip in worship at 9 am. Thanks for your interest and support of our youth ministries!



“Buy with Heart” this Christmas

We invite you to visit our Equal Exchange (fair trade) table in the Narthex or click [HERE](#) for our online store for some great gift options! Items for sale include:

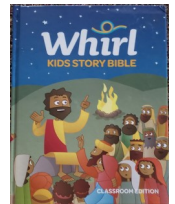
- Chocolate
- Coffee
- Tea
- Cashews
- LOC coffee mugs
- LOC masks

All sales support our summer youth trips as well as small farmers around the world! These items make great gifts for teachers, friends or stocking stuffers. Our Light of Christ kids shirts are also available for \$10 each and would make a great gift for your kids, if they don't already have one! Items can also be delivered for free around the Delano area and you can include a note and even gift wrapping. Thanks for your support and for “shopping with heart” this Christmas.



The B-I-B-L-E, Yes, That's the Book for Me!

An invitation to help our young people connect with the whole church family and the Book that is so central for our lives...



Recently our young people received Bibles. I'm working on a project that hopefully helps them see why this book called the Bible is so important. If you would be so kind as to share your favorite Bible passage and briefly state why this verse is so important, I would greatly appreciate it. You can [email it to me](#), text or call me (320-212-2583), or put it in the basket by the Bibles in the church entry way.

Thanks much! *LaDonna*

High School Ministries

- **Donuts & Discussion** – We have started a new Bible study for HS youth called Donuts & Discussion (D&D). We will meet once/month on Sunday mornings, typically the first Sunday of the month, at 10:10 am in the newly remodeled space (The Living Room). We had originally planned to join the Sunday Morning Adult Bible Study group but changed this and now will be meeting just as a HS group. These mornings will be a chance to hang out, talk about our highs and lows (faith and life) and have donuts. We hope you can join us for this great opportunity!

⇒ **Sunday, January 9th, 10:10 am**

- **HS Fellowship** – Each week our 9th-12th grade youth will meet as a group on Wednesday nights from 7:30-8:45 pm (but come when you are able) in the new Living Room space to share time with friends, have food, fellowship and fun! Bring a friend and enjoy some time in a safe space where all are welcome!

