



Worship

- In-person worship—**9:00 am Sundays**
- Online worship continues, and will be posted on the [church website](#) and [Facebook page](#)



Church Council 2023

Mike Boyack
Laurie Brown
Billie Chock
Tim Current (treas.)
Steven Dickey (pres.)
Derek Horeis (v. pres.)
Dan Paulson
Lisa Spencer (sec'y.)
Natasha Werner
Pastor Bruce Kuenzel



Contact us!

Light of Christ Lutheran
3976 County Line Road SE
Delano, MN 55328
(763) 972-2400



LightOfChristLutheran.com
Terri.Reuter@locdelano.com

We welcomed the following new Light of Christ Partners in Ministry on May 7th:



Terry & Roxie Albers	Mary Schultz
Nick & Blake Mullen <i>Ronan</i>	Tom Screeden & Amy Murphy
Mike & Alicia Pink <i>Kaitlyn, Sydney</i>	Jon & Lydia Wissink <i>Addyson</i>
Kirby & Carrie Quamen <i>Annika, Zachariah</i>	Rick & Sara Zabel
John & Lanaya Schnettler <i>Jack</i>	



Free Fresh Produce and Dairy

Monday, May 8th
4:00 pm—until gone

Boxes of fresh produce and dairy products will be available for drive through pickup on a first come, first serve basis at the following locations:

Corcoran

St. Thomas Catholic Church
20000 County Road 10
Corcoran, MN 55340

Rockford

Our Father's Lutheran
3903 Gilbert Ave SE
Rockford, MN 55373

Delano

Light of Christ Lutheran Church
3976 County Line Road SE
Delano, MN 55328

Buffalo

Buffalo Covenant Church
1601 Highway 25 North
Buffalo, MN 55313

For assistance locating a specific site or for questions, please contact us at nourishinghope.oflc@gmail.com or Facebook Messenger.

**Food boxes are for anyone at all! Please come by to get one.
Or, pass on the information to someone else!**

May Food Distribution

Our food distribution ministry, Nourishing Hope, needs volunteers for **Monday, May 8**. Sign-up link below:

- **3:30 pm** when we distribute about 90 boxes of food right here in our church parking lot. (<https://www.signupgenius.com/go/30E0848A9A72AAAF85-food1>)

Or speak with Tim Johnson (952-472-1755). Thank you!



Can Groups Volunteer At Love In the Name of Christ?

Yes, absolutely! We need helping hands to sort items, prepare weekly dinners for our *Fresh Start Program* and more. Call 763-972-6547 to schedule a time for your group to serve at Love INC Heartland.



Did you know...

- Almost 200 million shoes end up in landfills every year
- Shoes in a landfill take up to 30-40 years to decompose
- More than 6 million people worldwide don't even own a pair of shoes

Spring weather is finally here! As you do some spring cleaning and go through shoes at home, please consider bringing old tennis shoes to Light of Christ to support our youth going to Belize! Here are the details:

What: Used sneaker fundraiser/recycling program through [GotSneakers?](#)

Proceeds: Each pair of sneakers brings in at least \$0.25 (but up to \$7 depending on the condition) and will benefit our youth going to Belize

When: Now until June 11

Drop Off: Collection bins at LOC (Narthex and Fellowship Hall)

Note: Only tennis shoes are accepted

Thanks for supporting our Belize youth as we doing some spring cleaning while also helping out our environment and those in need!

Caring Corner

(from Sue Fink of the Healing & Wholeness Committee)



Happy May! Summer is coming soon!! Aren't you so ready? God is good.

May is Mental Health Awareness Month. Your Healing and Wholeness Ministry is co-sponsoring the Confirmation Family Matters Event on Wednesday May 17 6:30-8:00 pm in the sanctuary. Join us for a night of music and an encouraging message about youth and mental health on the theme, "You are enough" with Minneapolis native, Rachel Kurtz!!! THIS FREE EVENT IS OPEN TO ALL. Invite all your friends!!

We are also planning our 3rd annual WALK-A-MILE-IN-MY-SHOES event on Sunday, May 21 at 10:30 am. Guess what? This year we are walking from Light of Christ a mile into Lake Rebecca Park for a Communing with nature" scavenger hunt to open our senses for mental wellness. We encourage families to join us. IT WILL BE SO FUN! Come rain or shine. Donations will go to the National Alliance on Mental Illness (NAMI MN)

Mental Health/Illness continues to be a daily topic in the news and in each of our lives. As a congregational family we want to erase the stigma associated with mental illness so that we can reach out for help or be supportive and accepting of one another. 1 in 5 adults and 1 in 6 youth experience a mental health condition each year and only half receive treatment. Half of all lifetime mental illness begins by age 14 and 75% by age 24. Sadly, the average delay between the onset of mental illness symptoms and treatment is 11 years.

Unfortunately, our medical mental health care system is lagging way behind the increasing need for care, but improvements and innovations are in development. Early intervention is crucial for the best outcomes, so if you need help, see your doctor or therapist without delay. You can also call 988 or text 741741 to connect with a trained mental health counselor.

NAMI's mantra: "It's not your fault. You're not alone. There is hope."

Rachel Kurtz Coming to Delano!

When: Wednesday, May 17th – 6:30 to 8:00 pm

Where: Light of Christ Lutheran Church, Delano

Who: Open to all! Also live-streamed at facebook.com/lightofchristlutheranchurch

Join us for a night of music and an encouraging message about youth and mental health on the theme, “You are Enough” with Minneapolis native, Rachel Kurtz!!

Raising awareness for world hunger, hurricane relief, and multi-cultural reconciliation, Kurtz’s powerhouse voice and heartfelt performances have been electrifying crowds in Atlanta’s Georgia Dome, New Orleans’ Superdome, Texas’ Alamo Dome, and hundreds of other concert venues from coast to coast.

A remarkable vocalist and magnetic stage presence, Kurtz has released a new 13-song collection of original soul, Americana, and blues tracks backed by some of Minneapolis’ finest session musicians.

***Sponsored by the Healing and Wholeness Committee and the Confirmation ministry at Light of Christ Lutheran.*

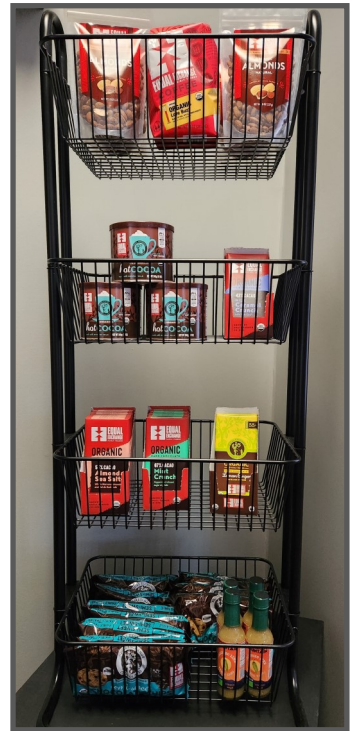
Belize Prayer Partners

Each summer we ask our congregation family to pray for our service trip participants as we prepare and then also while we are on our trip. We give each prayer partner an itinerary so that they know what we’re up to each day and then encourage them to attend our return worship service after the trip (which is on August 6 this year). This summer we are looking for approximately 35 people who will commit to praying for our HS youth and adults as we head to Belize to serve, grow and learn from July 29 – August 6. [Click here to complete the short form](#) to indicate your interest. Thanks for your partnership in ministry!



Gifts for Mom, Dad or Teachers!

Equal Exchange items make great gifts for Mother’s or Father’s Day or year-end teacher gifts! We even have some new items (beyond the coffee, chocolate, tea and nuts that we’ve had in past)... including hot sauce and chocolate chips! You can purchase items before or after worship each Sunday (from the “LOC Youth Corner”) or [online through this link](#). Items can even be gift wrapped or even delivered (in the Delano area)! Proceeds benefit the youth going to Belize and also help small farmers around the world. Thanks for your support!



Connecting Parents and Youth for Babysitting Opportunities

Are you a youth looking for some new babysitting or nanny/manny opportunities? Are you a parent looking for responsible, reliable babysitters (or summer care)? Complete this [short online form](#) to indicate your interest (if you are a youth) or what childcare needs you have (if you are a parent) and Kirsten will help you get connected!



Donate from Your Smart Phone

Light of Christ offers a mobile version of our online giving page to make it easy for you to give anytime from your smart phone. Simply scan the image you see here using your phone’s QR code reader or go to the [church website](#) and locate the online giving page.



At Least a Dollar a Day More

At least a dollar a day more . . . At least a dollar a day more this year than last year . . . **At least a dollar a day more this year in 2023.** At least a dollar a day more to keep growing our youth and family ministry. That's the **financial challenge** before us this year.

Like many things here at Light of Christ our youth and family ministry is growing as we emerge from the pandemic. One of the key factors in nurturing that growth is the decision to move **Kirsten Kelly**, our Youth and Family Ministry Director, to full-time. Last year, she was at 20 hours per week. This year, she is at **30 hours per week**. Next year, we plan to move her to 40 hours per week.

We need to do this **because her "plate" is too small**. There is not enough room on her "plate" for all that she needs to do to keep our youth and family ministry growing.

For example, last summer we had fifteen high schoolers go on our mission trip to the North Shore. This summer we have 35 high schoolers and 20 adults going on our mission trip to Belize. Kirsten's workload is growing. **She needs a bigger "plate."**

I see this as an investment in our kids and their families, and not just the kids and families in junior high and high school, but the kids and their families in intermediate and elementary school right now. They will be in junior high and senior high someday. This appeal is **an investment in the future of Light of Christ**.

In addition, Kirsten is willing to work full-time. When she was hired five years ago, she only wanted part-time because Drew, their youngest, was just a newborn. But he's going to start kindergarten this Fall and so moving from part-time to full-time makes sense both personally and professionally. What's more, we would be moving toward a full-time youth and family director no matter who our youth family director might be.

I believe that it is essential that we do this. I can't begin to tell you how hard it is to find someone like Kirsten these days -- someone with her education (a bachelor's degree in youth and family ministry), experience, and expertise. Every church wants someone like Kirsten, and very few have a youth director like her.

So, **I'd like every family here at Light of Christ to prayerfully consider what you can do to meet this challenge**. Now I know that some of you have done it already. Some of you have given, or will give, at least a dollar a day more than you did last year. Thank you so much for your generosity.

And I also know that some of you can't give at least a dollar a day more. Financial constraints, a changing family situation, or some other circumstances make it difficult, if not impossible, for you to increase your giving this year. I understand that, and I appreciate that. Please just give whatever you can this year.

In January we launched our strategic vision. **"Let us build a house where love can dwell . . ."** We believe that the Holy Spirit is at work here at Light of Christ to build a spiritual house where love dwells -- where everyone is loved, welcomed, and accepted, from the very youngest to the very oldest.

So please, give generously this year. Give as much as you can. And if you can give at least a dollar a day more, please do. Together we can do this. Ways to give are included below.

Thank you and God bless you as you grow in generosity.

Pastor Bruce

Give via our website at: <https://www.lightofchristlutheran.com/give>

Or you can give directly from your smart phone. Simply scan the image you see here using your phone's QR code reader to access the online giving page. Choose the **"General Fund"** tile.





You're invited to VBS at Light of Christ Lutheran Church!!

Kids will be launched on a cosmic quest where they'll have a blast shining Jesus' light to the world. It's an out-of-this-world adventure that's light years of faith-building fun!



July 23rd—26th
5:15-8:00 pm

High School Fellowship

Join us for nights of
fellowship, friends,
faith, food and FUN!

HS Fellowship Schedule:

- ⇒ **May 10** = Trivia Night
- ⇒ **May 17** = Rachel Kurtz,
Family Matters
(6:30-8 pm)

VBS Supplies Needed

There are a few items that we are looking to borrow for VBS. These items would be needed from **May 14 to July 30**: 6 Flashlights (handheld C-size battery); 12 empty egg cartons; 3-6 artificial plants (these are Jerusalem roadside decorations – palm like preferred, should be at least waist high. If you have any of these items that we could borrow, please contact LaDonna. Thank you!

Wednesday Night Kickball

Our high school youth took on the 7th and 8th grade Confirmation youth in a game of kickball last Wednesday. It was a fun night for all with freezies afterwards. It's great to finally be outside for our Wednesday night games!

